



BOBBINHOOD CREWNECK PATTERN



**BOBBINHOOD
PRESENTS
OUR KIDS
CREWNECK**

**3, 2, 1...
HERE
WE GO!**

“This sweater must be one of my big girls’ favorites. She loves the print of course, but also the fit. It is a comfy sweater, just the way she likes it. And the fun part is, it is easy to make, especially with a serger.

Let the fun of making begin!”

Barbara de Ru aka Bobbinhood

1st THINGS 1st

- 1** This pattern is **WITHOUT** seam allowance. We like to add 1 cm (3/8 in), but please add what you are used to.
- 2** The digital pattern is suitable to be printed at home in letter or A4. **DO NOT SCALE.** It should be printed at 100%. Please check with the **TEST** square on page 1. Best is to print these files from Acrobat Reader. This application can be downloaded for free from their website.
- 3** Pre-wash your fabric and iron before cutting. No fun at all if you ask me, but veeeery important ;)
- 4** Have fun! This manual is just a guideline, please feel free to adjust the pattern and make the garment your own.

fabric requirements

You can use a knitted fabric like a jersey, sweat fabric, teddy.....

Size in age <i>Bodylength in cm</i>	1/1,5 80/86	3/4 104/110	9/10 140/146
CM	50	65	105

supplies

- Thread
- Scissors
- Pins



Age	Bodylength in cm	Line
1/1,5	80/86	— — — — — — — — — —
2	92/98	--- --- --- --- --- --- --- ---
3/4	104/110	— — — — — — — — — —
5/6	116/122	———— — ————— — —————
7/8	128/134	-----
9/10	140/146	—————



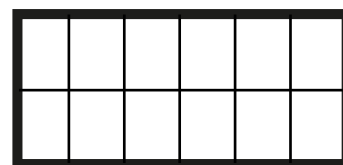
don't forget: this pattern has NO seam allowance



The digital pattern is suitable to be printed at home in letter or A4.

PLEASE DO NOT SCALE. Use the test square on the first page to check.

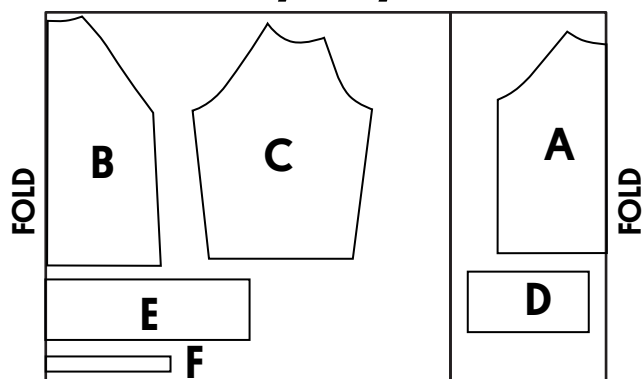
The pattern file has 6 columns and 2 rows.



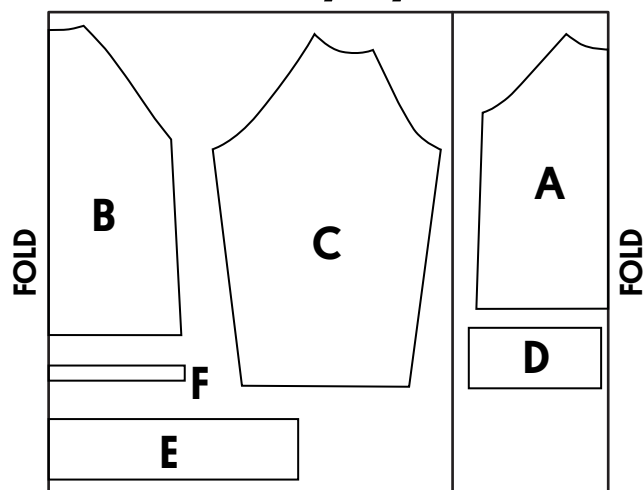


● Fabric is 145 cm (1.6 yard) wide.

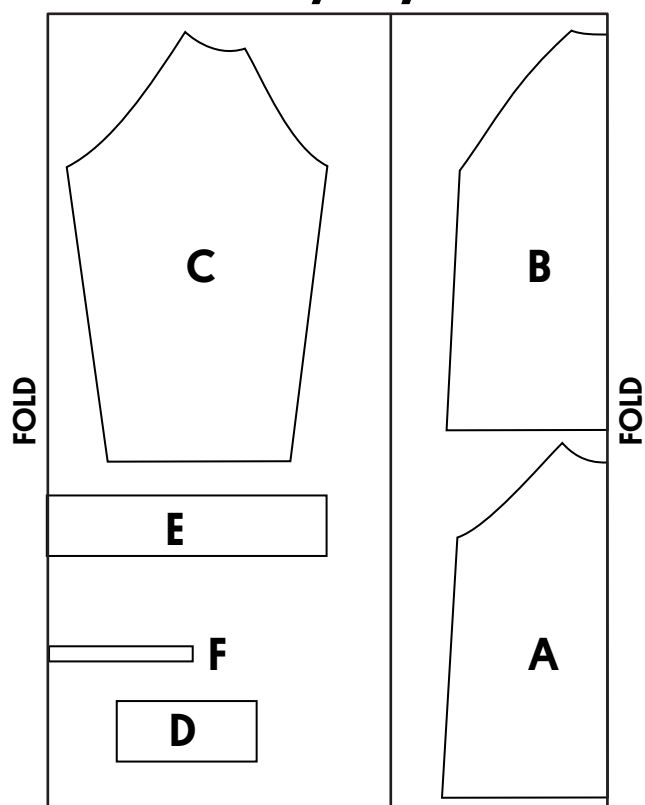
1/1,5y



3/4y



9/10y



A. Top front
1 x fabric, on fold

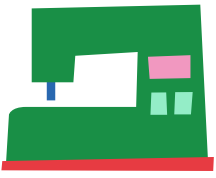
B. Top back
1 x fabric, on fold

C. Sleeves
2 x fabric

D. Cuffs
2 x fabric

E. Waistband
1 x fabric, on fold

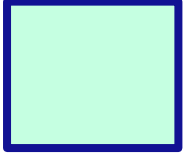
F. Necktape
1 x fabric, on fold



INSTRUCTIONS



RIGHT SIDE



WRONG SIDE



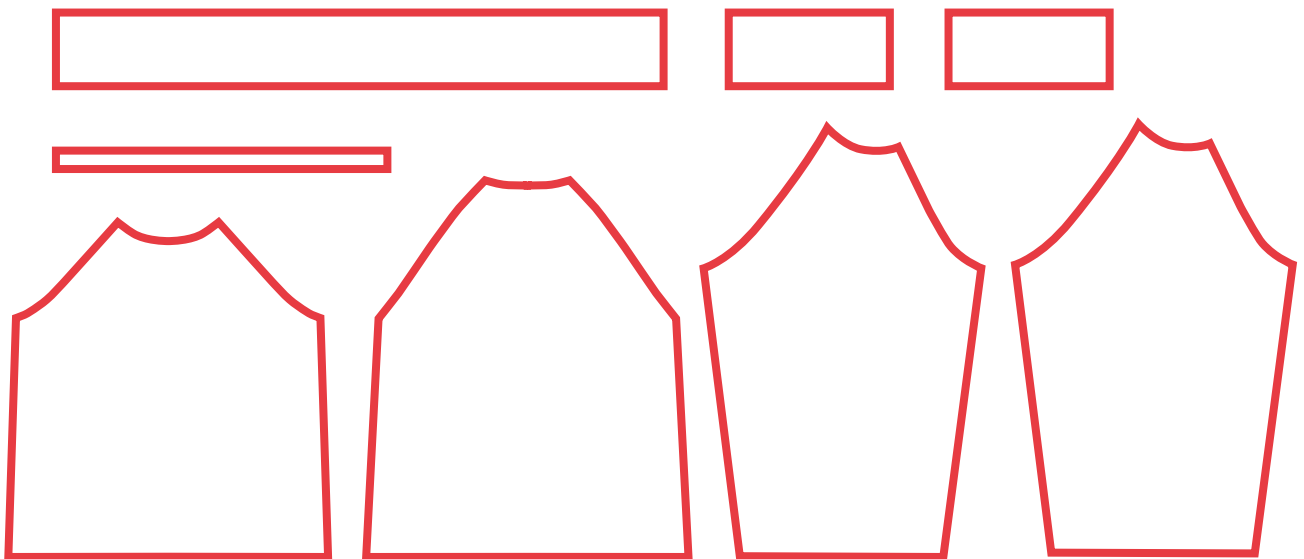
Seam that has to be stitched in that step.



Seam that has to be finished.

1

Skip this step if you are using a serger! If you don't have one... No problem. Just finish all seams first by using a zigzag stitch. Finish all seams that are indicated red.



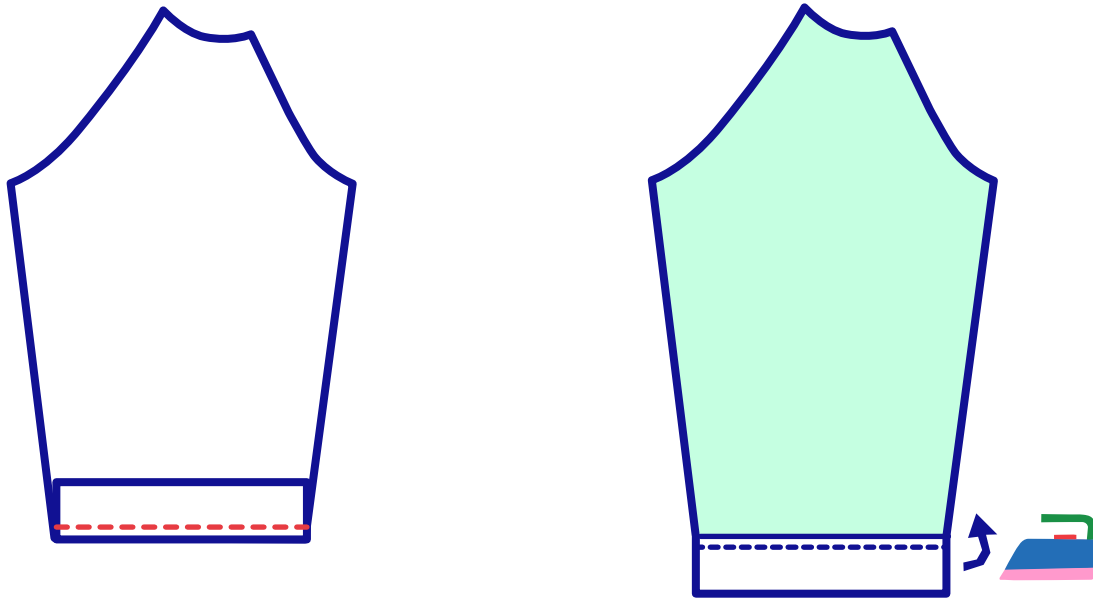
2

Press the cuffs, waistband and necktape. Fold them exactly in the middle of the longside. Make sure the right side is on the outside.



3

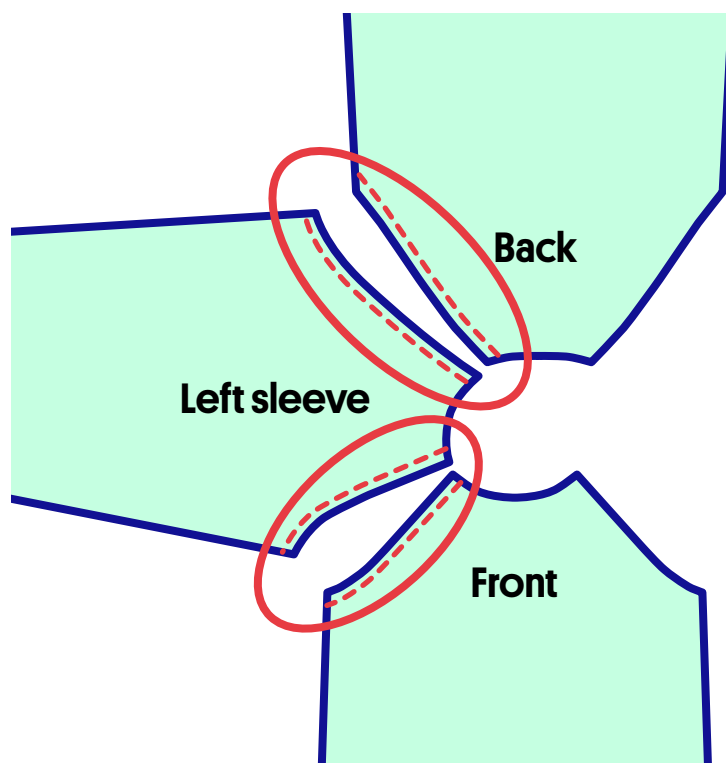
Attach the cuffs to the sleeves. Keep the cuff folded (they way you pressed them) and place it on the right side of the sleeve and attach. You are stitching 3 layers at once.



After stitching move the cuff and press. Repeat this process for the second sleeve.

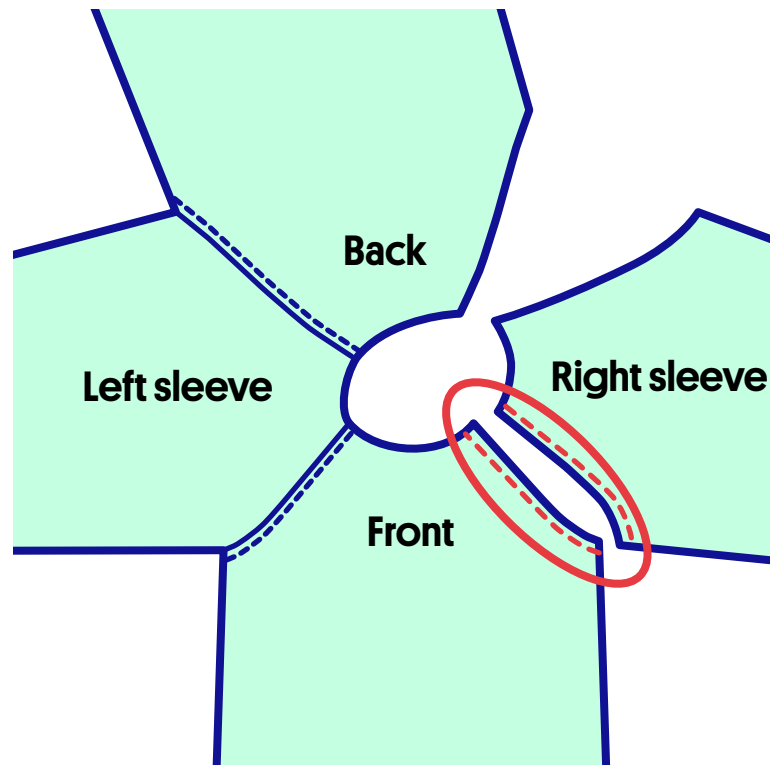
4

Attach the left sleeve to the front body and back body. Place the right side on the right side. Press.

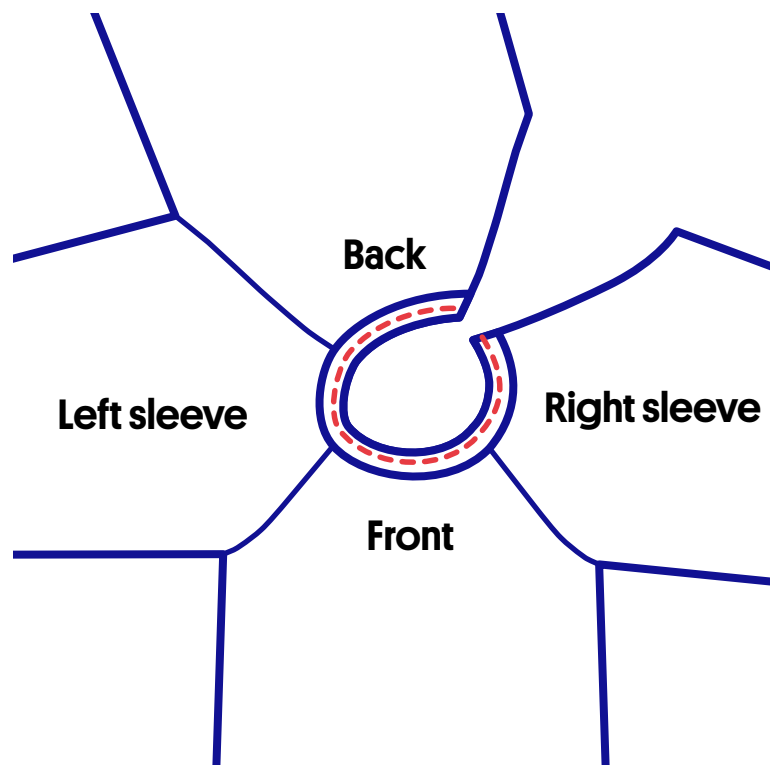


5

For the **RIGHT** sleeve only attach the **FRONT** part of the sleeve to the front body [right side on right side]. Press.

**6**

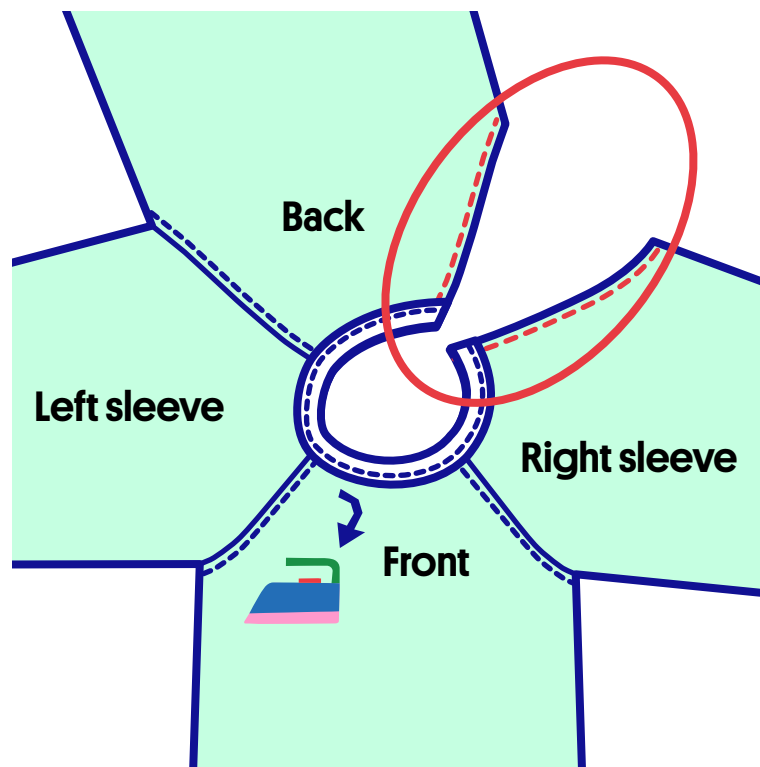
Now attach the necktape to the sweater. Leave the necktape folded as you ironed it. Lay right side on right side. You will be stitching 3 layers at once. The necktape is slightly smaller than the neckline. This way it will look better and fit nicely. Pull the necktape a bit, but make sure you pull evenly. It is a good idea to pin the necktape, then sew it. When it is to satisfaction finish it off [with your serger].



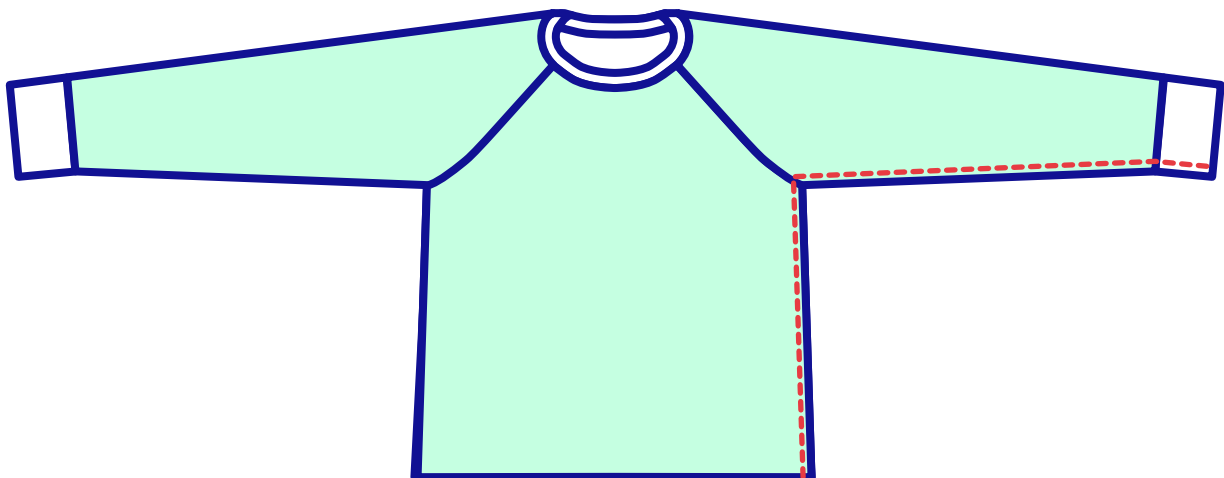
7

Press your neckband. Start at the neck and stitch the sleeve to the back body. (Right side on rightside).

As you can see now your sweater is a '✚' shape.

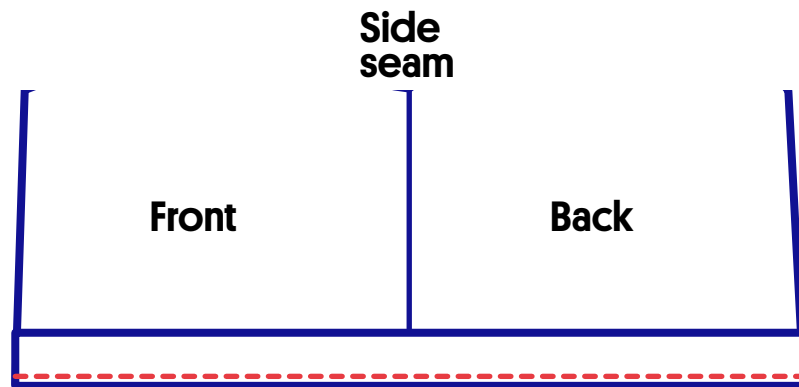
**8**

Lay the sweater down inside out, right side on right side. Close the sleeve and in the same movement close the side seam. Only close ONE side. Leave the other side open.



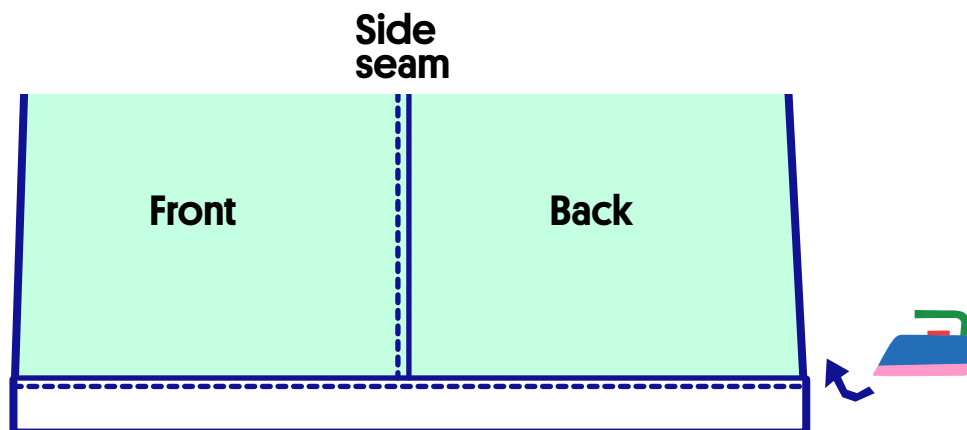
9

Now attach the waistband. Keep the waistband folded as you pressed it and place the right side on the right side. You will be stitching 3 layers at once. The waistband is slightly smaller than the hem, this will give your sweater a nice shape. Make sure you attach the waistband evenly.



10

Move the waistband down. Turn the sweater inside out and press the seam up.



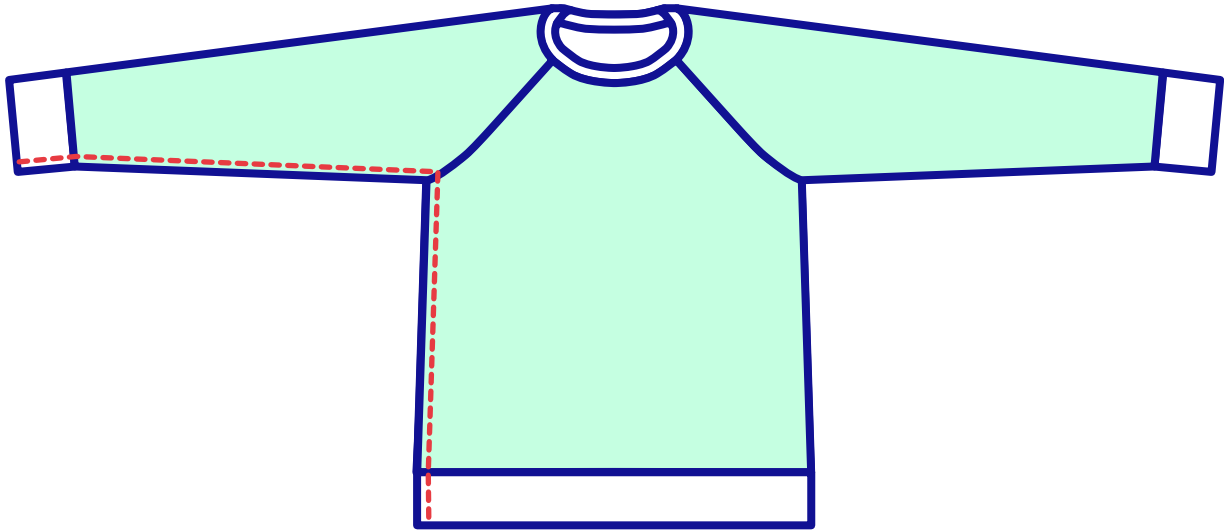
**Share what
you make
and inspire!**

#WEARE

BOBBIN

HOOD 

11 Place right side on right side and close the other sleeve en side seam as you did at step 7.



12 You just finished your own crewneck! PARTY! Throw confetti all around!

